

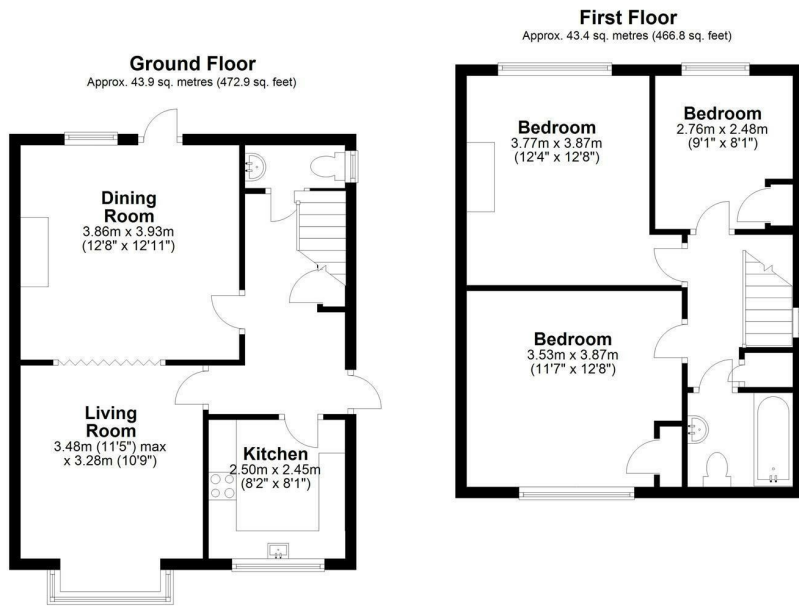


**Eswyn Road, London, SW17 8TR**

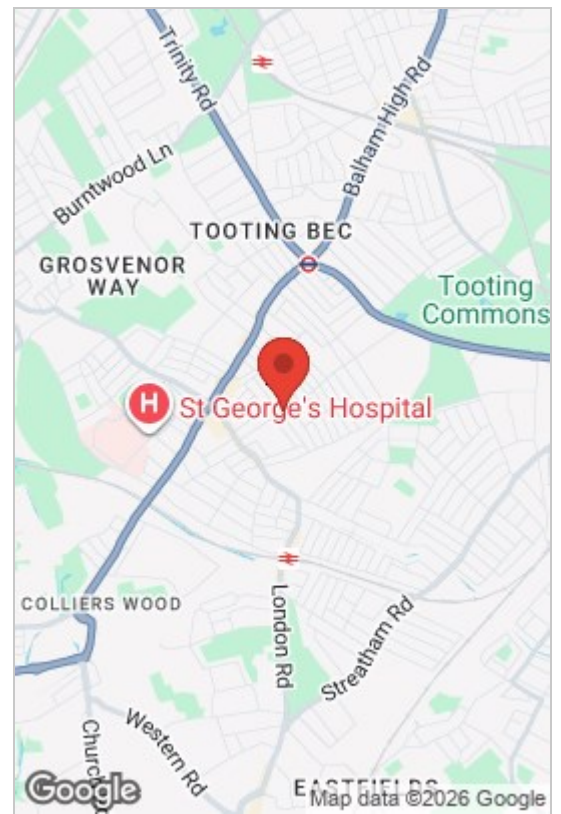
**Asking Price £699,950**

 3  1  1  D





Total area: approx. 87.3 sq. metres (939.8 sq. feet)

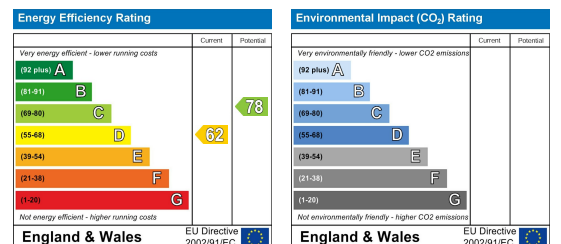


- Three Bedrooms
- Well Fitted Kitchen With Appliances
- Ground floor W.C and First Floor Bathroom
- Wood Flooring
- Side Entrance
- Large Lounge
- Close to Tooting Broadway
- Gas Central Heating.
- Rear Garden

This semi-detached house is located in Wandsworth Borough to Tooting Broadway. Well presented with solid wood flooring in all rooms except the bathroom and toilet which are tiled, double glazed throughout, two double and a good sized single bedrooms, An open plan living/dining room area, with a well fitted kitchen with granite work surfaces, family bathroom and a ground floor W.C along, front and rear gardens. Excellent Location located close to Tooting Broadway with numerous shopping and transport facilities close at hand, plus Tooting Broadway Northern Line Tube.



Council Tax Band: D



These particulars, whilst believed to be accurate are set out as a general outline only for guidance and do not constitute any part of an offer or contract. Intending purchasers should not rely on them as statements of representation of fact, but must satisfy themselves by inspection or otherwise as to their accuracy. No person in this firm's employment has the authority to make or give any representation or warranty in respect of the property.